

**Dorien Road  
Raynes Park, SW20 8EL**

**£925,000 Freehold**

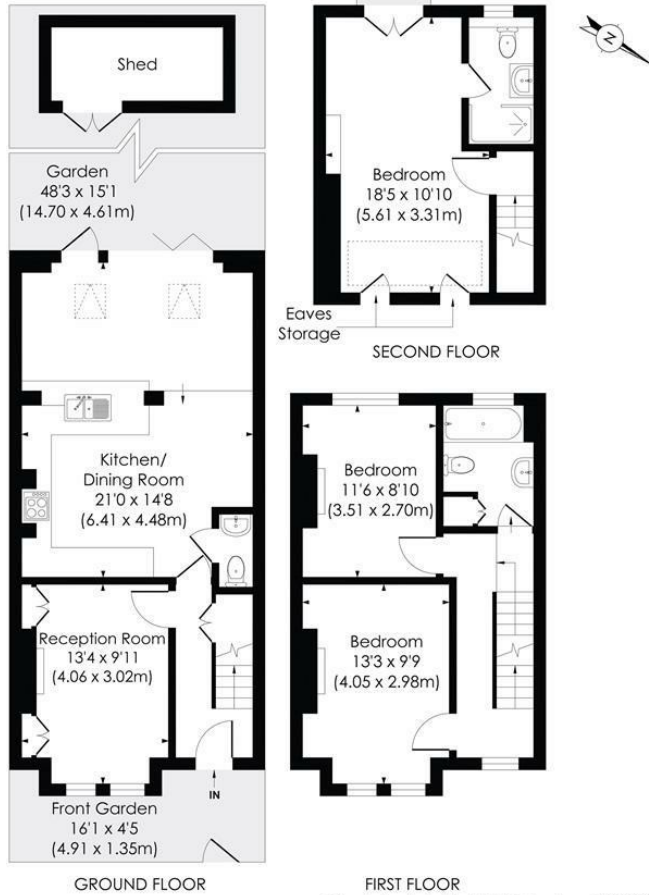


**DORIEAN ROAD, SW20**

Approx. Gross Internal Floor Area

1151 Sq. ft/106.90 Sq. m (Including Reduced Height)

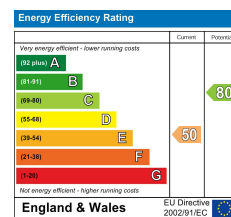
1119 Sq. ft/103.92 Sq. m (Excluding Reduced Height)



This floor plan has been prepared for the purpose of illustration only in accordance with the latest RICS code of measuring practice and is not to scale. All measurements and areas are approximate and whilst every effort has been made to ensure the accuracy of the plan contained here, no responsibility is taken for any error, omission or misstatement.

© Pixangle Property Marketing Ltd. info@pixangle.com Tel: 0208 870 2118

- Three Double Bedroom - Two Bathroom - Downstairs W.C
- Brick-Fronted Edwardian End Of Terrace Apostle House
- 48ft South West Facing Garden With Side Access
- Close To Raynes Park And Wimbledon Chase Stations
- Extended Kitchen Dining Room With Bifolding Doors
- Spacious Master Bedroom With En Suite Shower Room
- Plantation Shutters and Ornate Fireplaces
- No Onward Chain - 1,151 sqft-106.9 sqm
- EPC - E
- Council Tax Band - E



For Free Mortgage Quote and Best Mortgage Rates, call Ellisons Mortgage Advisor on 0208 944 9595



Although these particulars are believed to be correct, their accuracy is not guaranteed and they do not form part of any contract.

Celebrating 30 years of successful Sales and Lettings in Merton

